

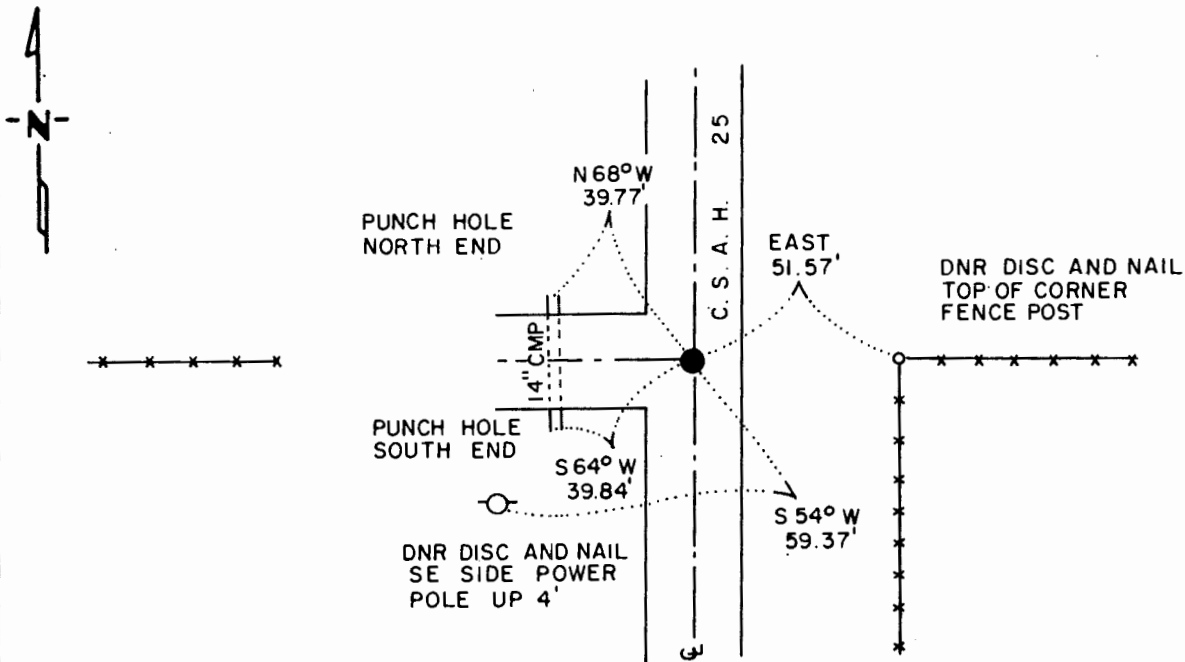
CERTIFICATE OF LOCATION OF GOVERNMENT CORNER

EAST QUARTER Corner of Section 8, Township 108 N., Range 43 W., 5th P.M.
 STATE OF MINNESOTA, County of MURRAY

At the corner location shown on the sketch:

- On 5-14-86 found a 6" x 6" x 9" STONE, DOWN 66"
DATE
- left monument as found, lowered monument, removed monument (explain)
- On 5-14-86 placed a 1 1/4" x 1 1/4" x 20" PERFORATED STEEL TUBE WITH
DATE ALUMINUM CAP STAMPED "DNR SURVEY MARKER", DOWN 0.3'

SKETCH OF REFERENCE TIES



BEARINGS OBSERVED WITH COMPASS

Statement of evidence relative to this corner location is on back of page.

J.A.G. 6-30-86
 FILE G-383

I hereby certify that this document and the data contained herein was prepared by me or under my direct supervision.

Lowell R. Pommeroy Jr. 8-21-86
SIGNATURE DATE

Registration No. 17005

- Land Surveyor, Professional Engineer
- County Surveyor, County Engineer

OFFICE OF THE COUNTY RECORDER

County of _____

I hereby certify that this document was filed in the Co. Recorders office at _____ M. on the _____ day of _____ A.D., 19 _____

County Recorder _____

By _____, Deputy

DOCUMENT NO. _____

East Quarter Corner Section 8, Township 108 North, Range 43 West

This corner was originally established by the U. S. General Land Office survey in 1866. The government notes show corner marked with a wood post set in mound of earth with pits and trench dug around the mound.

In May 1986, the DNR Bureau of Engineering contacted the Murray County Offices of the Recorder and Highway Engineer for corner information.

The following information was obtained from the County Recorder's Office.

Surveyor's Record Book, on page 207, contains a survey of Section 9 by J. W. Woolstencroft, dated November 21, 1908. Survey states all corners were established. Corner measures:

2649 ft. from the northeast corner Section 8

2649 ft. from the southeast corner Section 8

1324.5 ft. from a 1/16 corner to the north

No mention is made as to what was found or set at this corner.

The above information is also contained in the County Highway Engineer's Office.

The following information was obtained from the County Highway Engineer's Office:

A government corner tie sheet shows this corner as an iron pin assumed in C.S.A.H. 25.

On May 14, 1986, the DNR Bureau of Engineering hired a backhoe operated by Buffalo Ridge Plumbing and Heating of Ruthton to dig for evidence of this corner. Dug a 2-ft. east-west by 8-ft. north-south hole, the center at the intersection of a north-south road and fences east-west. Encountered an old road bed down 42" and found a 6" by 6" by 9" stone down 66" at natural ground. Stone had barb wire over it. Left stone as found and set a 3/4" by 10" rebar on its east side. Stone measures:

2645.38 ft. from the northeast corner Section 8

2650.48 ft. from the southeast corner Section 8

on center line north-south road, inline with fences east and west

Accept the found stone as the location of the corner.

Traverse information is available from the DNR Bureau of Engineering.